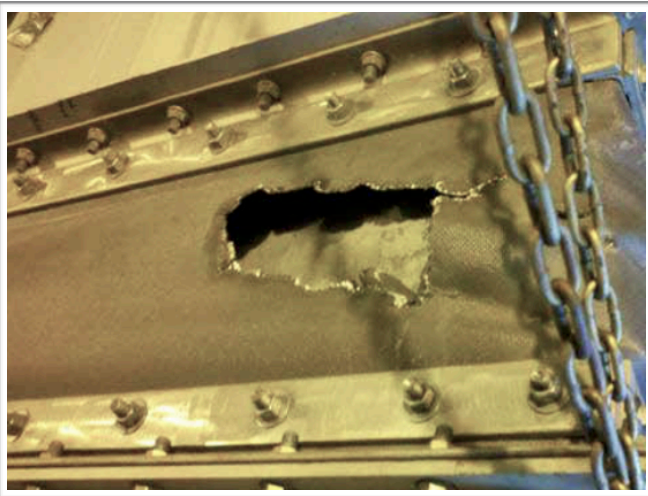




Beefing Up The Composite Reinforcement With Aramid Eliminates Tearing



Application: A gas turbine air inlet at a power generation plant.

Problem: A power plant was struggling with a failing expansion joint. Cracks and tears close to the corners were causing a loss of air to the turbine during operation. This loss of air causes turbine efficiency related problems.

Solution: The Holz Team suggested replacing the existing fiberglass reinforced expansion joint with a new Aramid reinforced fabric expansion joint. This reinforcement is stronger and denser than the fiberglass and will provide for a longer service life in this application.

The customer was pleased with the performance improvements and subsequently replaced the same expansion joint on the other turbines at the facility.

“Experience the Difference”

ejsales@holzrubber.com

Toll-Free: (800) 285-1600

Fax: (209)368-3246