



HOLZ
RUBBER COMPANY, INC.

Application Data Sheet

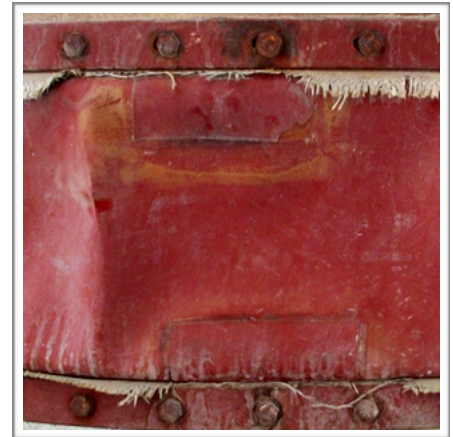
Adding A Teflon Gas Barrier To The Composite Joint Eliminates Premature Failure

Application: Ductwork between economizer and air heater, and PA ducts on a new 600MW lignite fired Circulating Fluidized Bed Boiler. Temps from 500° to 1100° F.

Problem: OEM expansion joints (fabricated by another company) consistently developed holes and leaks, even after repairs were made. The recently built plant went into un-planned outages several times to repair expansion joints.

Solution: The Holz Rubber Team provided replacement fabric expansion joints that were designed and constructed for the existing conditions, all while providing field support for the new installation at the customer's request.

The replacement fabric expansion joints solved the problems at the site and have allowed the customer to worry about more important things... like making money.



“Experience the Difference”

ejsales@holzrubber.com

Toll-Free: (800) 285-1600

Fax: (209)368-3246