



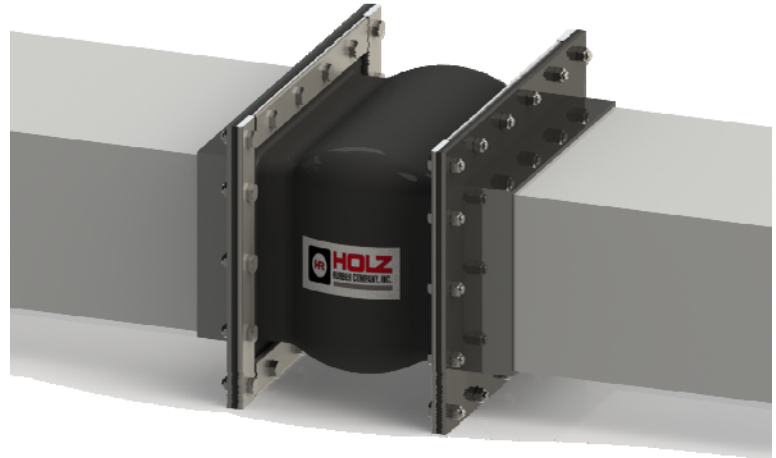
Application Data Sheet

Coal Fired Power Plant Converted to one of the Cleanest Solid Fuel Plants in the Country

*Strict Emission regulations
met while salvaging local
jobs*

Application:

Wet Scrubber Inlet in a Bio Mass Plant. The plant utilizes the abundance of urban waste, scrap wood, and tree trimmings from the area to generate power for over 45,000 homes.



Problem:

Their existing 1/4" thick Viton® expansion joint was tearing at the corners near the flanges due to excessive movement of the duct system. The expansion joint in service was not designed to compensate for the 3" of concurrent movement in the system.

Solution:

Holz Rubber Company, along with our local distributor visited the plant to evaluate the application. After the visit, Holz designed a 3/8" thick Viton® expansion joint with wire reinforcement to prevent tearing. More importantly, this expansion joint was designed to allow the excessive concurrent movements.