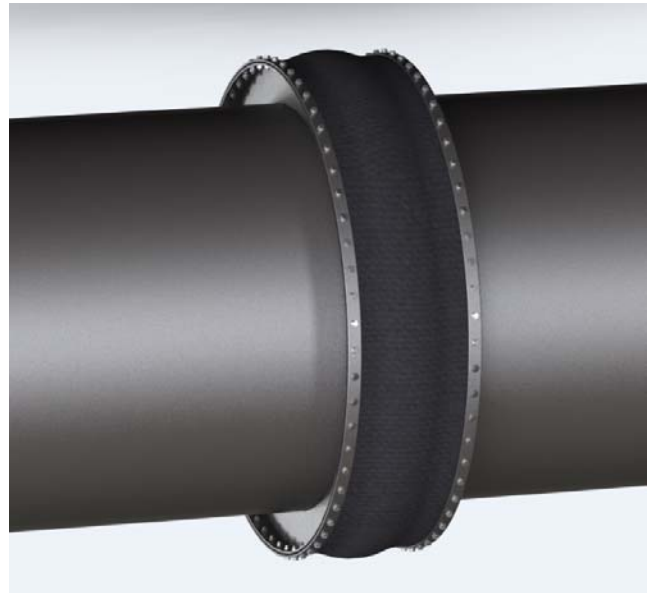


Torsional Misalignment On Bag Filter Flanges Causes Expansion Joint Failure

Proper piping alignment is critical to an Expansion Joints life cycle

Application:

The outlet to the bag filter at Carbon Black Manufacturing Facility.



Problem:

The existing flanges were misaligned creating a twist in the expansion joint during installation. This twist caused material to fold over on itself creating hot spots which lead to premature failure. Additionally the existing expansion joint was not designed to handle the operating temperature.

Solution:

Holz Rubber Company supplied a HRPL7 to handle the high temperature. The end user was instructed that they should align their piping to ensure a proper life cycle of the expansion joint. Unfortunately, the facility could not align their piping until the next outage. Since the plant could not modify the piping the Holz engineering team worked with the plant engineering team to come up with an installation method to eliminate the twist.